

**2011 NRHA**

September 7, 2011

---

---

---

---

---

---

---

---



### History

- Founded in 1978 as the National Rural Primary Care Association.
- Celebrated 25<sup>th</sup> Anniversary in 2002.
- Offices in Kansas City, Missouri and Washington, DC.



National Rural Health Association

---

---

---


---

---

---

---

---



### Who Are We?

- *The* voice for rural health care.
- A non-partisan, non-profit membership driven organization with over 22,000 members.
- A source of information for policymakers and NRHA members.
- A trusted resource for rural stakeholders.

National Rural Health Association

---

---

---

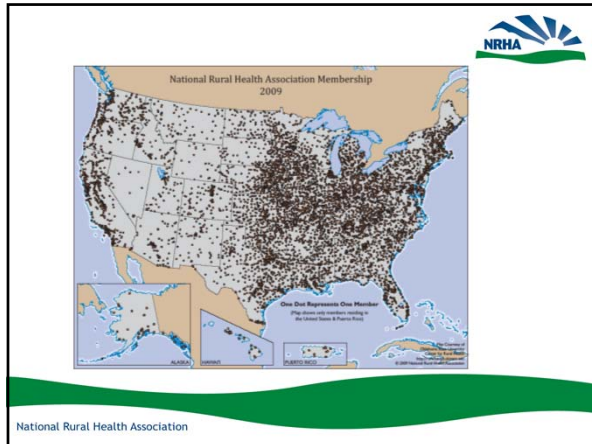
---

---

---

---

---




---

---

---

---

---

---

---

---



## The NRHA Offers...

**Advocacy and Policy Development**

- Legislative development, strategy & tracking
- Action Alerts
- Information Alerts
- Congressional testimony
- Appropriations tracking
- Comments on regulations
- Policy briefs and papers



National Rural Health Association

---

---

---

---

---

---

---

---



## The NRHA Offers...

**Communications and Information Access:**

- Monthly E-News
- Quarterly publication: *Rural Roads*
- Journal of Rural Health
- Other publications
- Policy experts
- Organization linkages

Website: [www.RuralHealthWeb.org](http://www.RuralHealthWeb.org)



National Rural Health Association

---

---

---

---

---

---

---

---



## The NRHA Offers...

**Educational Opportunities**

- RHC/CAH Conference: September 2011, Kansas City, MO
- Multiracial & Multicultural Health: Dec 2011, Daytona Beach, FL
- Policy Institute: Late January 2012, Washington, DC
- Rural Medical Educators: May 2012, Denver, CO
- 34th Annual Conference: May 2012, Denver, CO
- Skill-Building Workshop: July 2012, Seattle, WA
- Quality & Clinical Conference: July 2012, Seattle, WA

National Rural Health Association

---

---

---

---

---

---

---

---

---

---



## The NRHA Offers...

**Leadership Opportunities:**

- Rural Health Fellows Program
- Constituency Groups, Issue Groups
- Develop papers for review by Rural Health Congress
- Provide issue expertise to NRHA staff

National Rural Health Association

---

---

---

---

---

---

---

---

---

---



## The NRHA Offers...

**Networking Opportunities**

- Sharing of information, best practices, experiences
- Innovative ideas
- Research
- Build contacts among peers




National Rural Health Association

---

---

---

---

---

---

---

---

---

---



## Organizational Structure



- Board of Trustees
- Rural Health Congress
- Government Affairs Committee
- Constituency Groups

National Rural Health Association

---

---

---

---

---

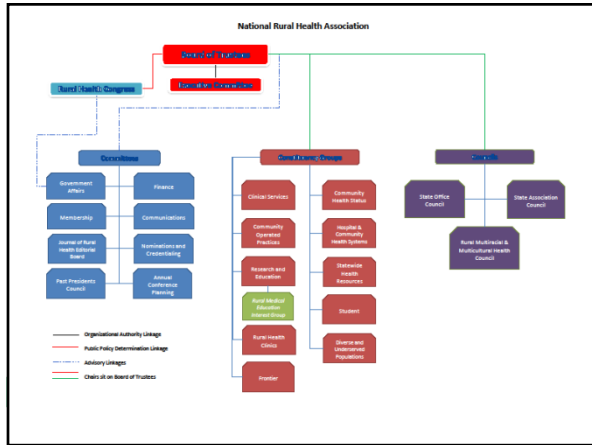
---

---

---

---

---




---

---

---

---

---

---

---

---

---

---



## The Policy Board and the Government Affairs Committee

### Rural Health Congress

The Rural Health Congress is the policy-making body of the National Rural Health Association. Includes representatives from the constituency groups, State Association Council, State Office Council, and the Association's officers.. The Rural Health Congress determines the association's positions on public policy.

### Government Affairs Committee

The NRHA's Government Affairs Committee works with the NRHA's Government Affairs staff to develop the association's legislative agenda. The committee develops and implements strategies to ensure that the association's public policies and government affairs activities are fully addressed and communicated.

National Rural Health Association

---

---

---

---

---


---

---

---

---

---



## Constituency Groups and Councils

- **Clinical Services:** Members interested in clinical issues, including proprietary and non-proprietary practices.
- **Community-Operated Practices:** Members affiliated with a primary care practice operated and governed by a community board of directors, such as a community health center.
- **Diverse Underserved Populations:** Members that work with populations with unique health care needs, e.g., rural elderly, American Indians, migrant and seasonal farm workers.
- **Frontier:** Diverse membership (clinicians, researchers, statewide organizations) united because they work or live in sparsely populated areas.
- **Hospitals & Community Health Systems:** rural hospitals or hospitals with significant interest in rural areas.

National Rural Health Association

---

---

---

---

---


---

---

---

---

---



## Constituency Groups and Councils

- **Research and Education:** practitioners and scientists located at academic medical centers as well as persons involved in health professions education in rural communities.
- **Rural Health Clinics**
- **Statewide Health Resources:** Members interested in building or strengthening statewide rural health care systems.
- **Community Grassroots:** Members interested in NRHA's grassroots efforts.
- **State Office Council:** Members from State Offices of Rural Health
- **State Association Council:** Members representing State Rural Health Associations
- **Student:** Members who are full-time students.

National Rural Health Association

---

---

---

---

---

---

---

---

---

---



RuralHealthWeb.org  
**National Rural Health Association**

Home About the NRHA Become a Member Contact Us Search

**About Rural Health**

Policy & Advocacy

Programs & Events

Publications & News

Services & Sponsors

**Rural Health Topics**

- ▣ Clinical Issues
- ▣ Community Health Centers
- ▣ Continuing Education
- ▣ Critical Access Hospitals
- ▣ State Associations

View All Topics

**Rural Health Fact**

Dental care, as measured by dental visits in the last year, tends to be lower among 18-64 year-old people in rural areas than in urban areas across all four regions of the country.

Find out more about rural health



**Improving the Health of 62 Million Rural Americans**

**Improving Quality and Patient Safety in Rural Hospitals**

Are you a health professional dedicated to continuously improving the quality of care in your rural community?

If so, the National Rural Health Association's (NRHA) Quality and Clinical Conference is right for you. This interactive, educational conference is designed for quality improvement coordinators, performance improvement coordinators, rural clinicians and quality improvement organizations practicing on the front lines in rural health care. Taking place July 15-17 in San Diego, Calif., this important, cutting-edge conference will provide tools, research and collaborative opportunities to improve the quality of care in rural hospitals and integrate population health concerns into clinical practice.

---

---

---

---

---

---

---

---

---

---



## Questions?

Kris Sparks, NRHA President 2011  
[Kris.sparks@doh.wa.gov](mailto:Kris.sparks@doh.wa.gov)  
360-236-2805

National Rural Health Association

---

---

---

---

---

---

---

---