

Appalachian Rural Health Research Initiative ARHRI

Project Summary
For ARHRI Partners and Public
August 31, 2008

Sponsored by:

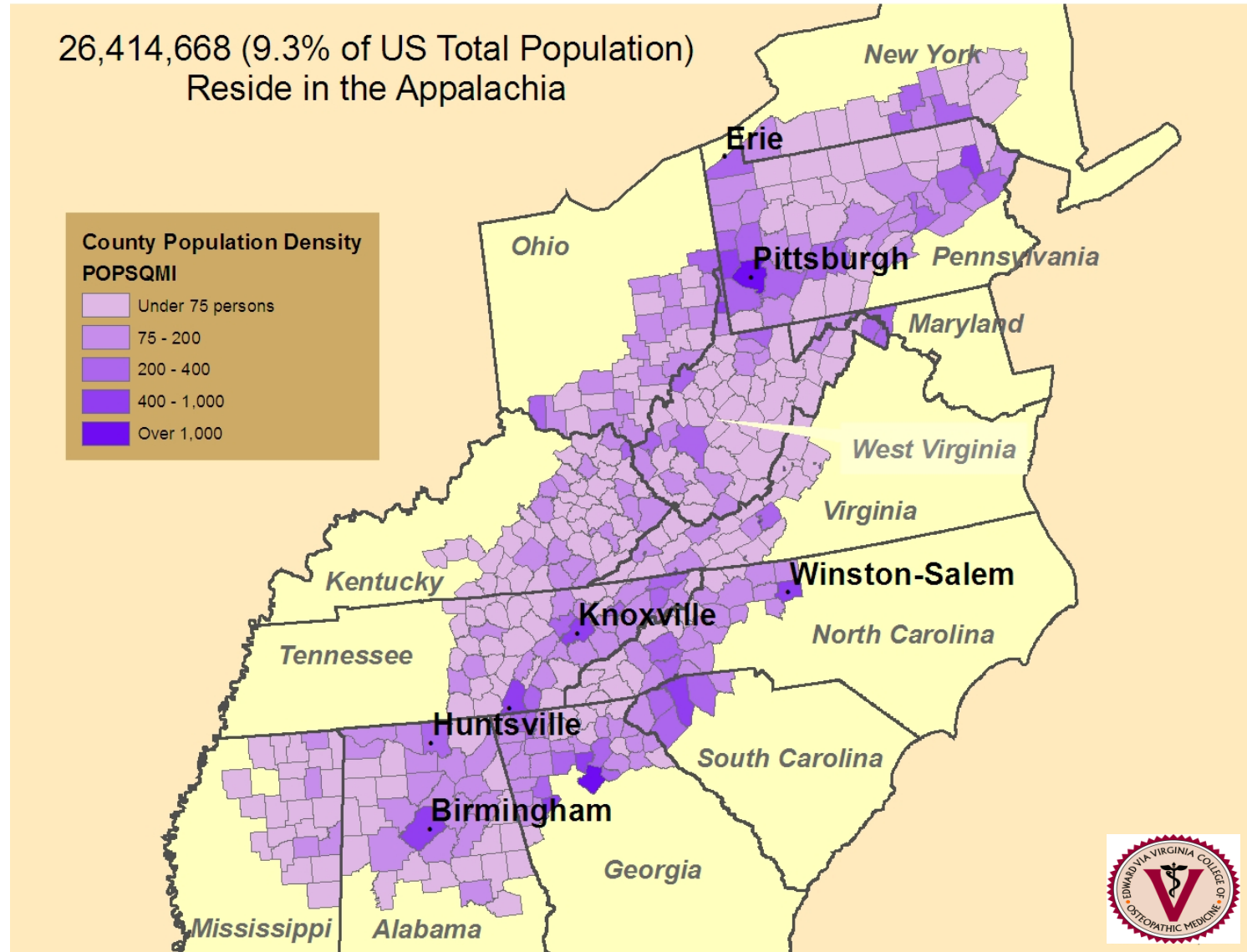
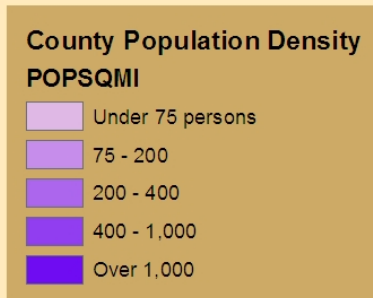


Project Overview

- *Created to foster collaborative efforts for regional research initiatives focusing on Appalachia.*
- [National Organization of State Offices of Rural Health](#) provided seed funds for pilot project
- Goals of the project
 - Investigate and inventory current research and data
 - Identify regional collaborations and researchers
 - Identify a shared research focus for future collaborative projects
 - Strengthen relationships between State Offices of Rural Health, researchers, rural health stakeholders and medical schools
 - Generate a strategic roadmap to use to pursue funding and policy support at the state, regional and national levels.
- Long-term goal : Improve the health status of Appalachia.

Project Area- Appalachia

26,414,668 (9.3% of US Total Population)
Reside in the Appalachia



Scope of Project

- Core Team Formed
- Identify & Invite Participants
- Hire Facilitator
- Partner Teleconferences (3)
 - [June 24, 2008 Agenda and Minutes](#)
 - July 24, 2008 Agenda and Minutes
 - August 26, 2008 Agenda and Minutes
- Create Resource Clearinghouse
- Develop Strategic Plan

ARHRI Participant Directory

ARHRI Core Team

- Sharon Denham, Director, Appalachian Rural Health Institute; Ohio University
- Jane Hamel-Lambert, Associate Director, Appalachian Rural Health Institute; Ohio University
- [Ann Peton](#), Director, Center for Rural Health Policy, Education and Research; Virginia College of Osteopathic Medicine
- Heather Reed, Director, State Office of Rural Health, Ohio

ARHRI Participants

- Appalachian Regional Commission, Appalachian Health Policy Advisory Council
- Colleges of Osteopathic Medicine
 - Pikeville College School of Osteopathic Medicine; Pikeville, Kentucky
 - College of Osteopathic Medicine, Ohio University; Athens, Ohio
 - Lincoln Memorial University, DeBusk College of Osteopathic Medicine; Harrogate Tennessee
 - Edward Via Virginia College of Osteopathic Medicine; Blacksburg, Virginia
 - West Virginia School of Osteopathic Medicine; Lewisburg, West Virginia
- State Offices of Rural Health
 - Kentucky
 - Ohio
 - Tennessee
 - Virginia
 - West Virginia

Role of ARHRI Participants

- Appalachian Health Policy Advisory Council
 - Provide a summary of research activities; identify health concerns & disparities in the regions; provide summaries of key research reports.
- Colleges of Osteopathic Medicine
 - Summarize research accomplishments, including those focusing on Appalachian rural health; identify areas for collaboration.
- State Offices of Rural Health (SORH)
 - Describe the structure of each SORH and relationships with the state's Osteopathic schools. Provide information about relevant research activities in Appalachia, health issues, & potential collaborating entities for research efforts. Coordinate communications about ARHRI within their respective states.

Project Deliverables

- Regional Funding Resource Directory
- Regional Data Inventory
- Resource Clearinghouse
- Appalachian Rural Health Institute
Publication Resource Directory
- Maps
- Strategic Plan

ARHRI Resource Matrix for Clearinghouse

- Request for Information from Researchers
- Template- Resource/Research Data
- Template- Strategic Component

Resource Clearinghouse Information:

Appalachian Health Policy Advisory Council

- Substance Abuse Reports and Data, June 2008
- Report on Methamphetamine and Other Drug Use in Kentucky, March 2008
- Update on Appalachian Regional Commission Investments in Health, July 2008
- CV- Snider
- CV- Isaac

Resource Clearinghouse Information:

Colleges of Osteopathic Medicine

Pikeville College School of Osteopathic Medicine

- Strategic Component
- [Research Resources](#)
- CV- Buser & Harris

Ohio University College of Osteopathic Medicine

- Strategic Component
- [Research Resources](#)
- Appalachian Rural Health Institute, Ohio University
- Voinovich School of Leadership & Public Affairs
- CV- Knisely
CV- Balaji

Lincoln Memorial University DeBusk College of Osteopathic Medicine

- Strategic Component
- [Research Resources](#)
- CV-Stowers
- CV- Teitelbaum
- CV- Kiick

Edward Via Virginia College of Osteopathic Medicine

- Strategic Component
- [Research Resources](#)
- CV-Tooke-Rawlins

West Virginia School of Osteopathic Medicine

- Strategic Component
- [Research Resources](#)
- CV- Bridges
·CV- Pence

Resource Clearinghouse Information:

State Offices of Rural Health

[Kentucky Office of Rural Health](#)

- Rural Health Safety Net Program
- Strategic Component
- Research Resources
- CV- Allen

[Virginia Office of Rural Health](#)

- Rural Health Safety Net Program
- Strategic Component
- Research Resources
- CV- Wibberly

[Ohio State Office of Rural Health](#)

- [Rural Health Safety Net Program](#)
- Rural Health Safety Net Program
- Strategic Component
- Research Resources
- CV- Reed

[West Virginia Office of Rural Health](#)

- Rural Health Safety Net Program
- Strategic Component
- Research Resources
- CV- Bazzle

[Tennessee Office of Rural Health](#)

- Rural Health Safety Net Program
- Strategic Component
- Research Resources
- CV

Maps and Data Analysis

- Regional maps (provided by VCOM)
 - Demographic - [%Population over 65 by county](#)
 - [Infant mortality](#)
- Osteopathic
 - Colleges of Medicine
 - Osteopathic Physician Distribution
- Map Libraries
 - [Rural Assistance Center](#)
 - [HRSA's Geospatial Clearinghouse](#)
- ARC maps

ARHRI Strategic Plan

- Goals

- Create a resource clearinghouse that can be used to support rural health research in Appalachia.
- Facilitate Appalachian rural health research initiatives.

ARHRI Next Steps

- Next Steps

- Convene a meeting of participants and other interested parties

- Active sharing of ARHRI deliverables

- Power Point Presentation
 - Website