



*Arizona*



*Rural Health Office*  
*State Office of Rural Health Program*

**L. Gary Hart**

Director, Rural Health Office

**Lynda Bergsma**

Director, SORH Program

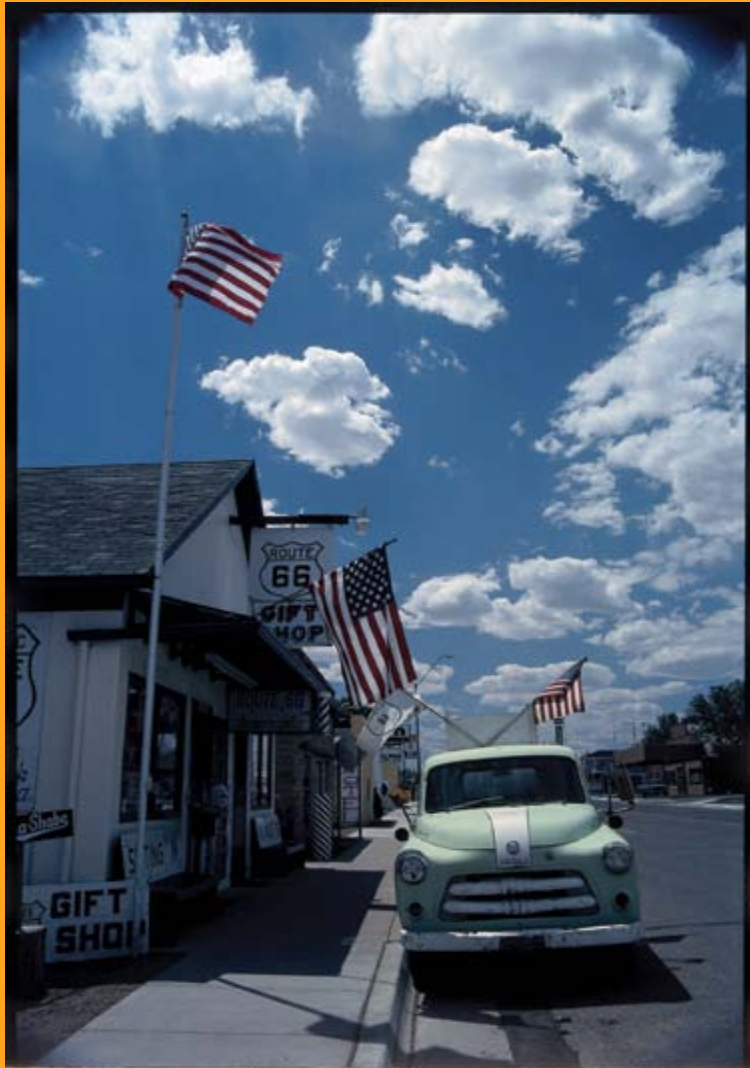
**Jennifer Peters**

Coordinator for Community Health Promotion

University of Arizona

Mel & Enid Zuckerman College of Public Health

# *College of Public Health/RHO*



## **Rural Health Service Learning Courses**

- RHO Collaboration with Arizona AHECs and College MCH Training grant to recruit public health practitioners for rural areas.
- Engages teams of students in community-based collaboration in a rural Arizona community.
- Students provide service to the host community while learning about factors influencing public health in a rural community environment.
- 6-day stay on site with room and travel costs provided.

# Interested in rural public health issues and economic development challenges in southwestern mining communities?

Please join us and register for the :

## RURAL HEALTH SERVICE LEARNING COURSE

August 15-20, 2009 (1 Credit, Summer Session II)

### During this one-week field-based course you will :

- **Learn** demographics, trends in economics and epidemiology, and major health outcome measures in the Miami-Globe, San Carlos region.
- **Assess** the health impact of the mining industry on the Miami-Globe community.
- **Become acquainted** with diverse community partners involved in public health and health care organizations in the community and the region.
- **Collaborate** with community partners to implement service projects addressing community needs.

**Course Faculty:** *Lynda Bergsma PhD, Cecilia Rosales, MD, MS, Jill Guernsey de Zapien BA, and D. Jean McClelland MLS*



**Registration is limited to 20 students**

While MPH/DrPH/PhD students will be given priority, other graduate students may apply.

***Travel/Food /Lodging is covered for all students!***

***Students are responsible for one credit tuition only***

For more information about CPH 597d , and how to register please send a brief email explaining your interest to:

Jean McClelland at [jmcc@u.arizona.edu](mailto:jmcc@u.arizona.edu)

Interested in public health challenges and human rights issues  
at the US-Mexico border ?

Please join us and register for the :

## **BORDER HEALTH SERVICE LEARNING INSTITUTE**

**August 10-14, 2009 in Ambos Nogales**  
**-one academic credit-one life changing week-**



**This one week service learning course will :**

- ❖ Give you hands on experience working with border communities and allow you to work directly with public health agencies in both the US and Mexico.
- ❖ Focus on the relationship between migration, economic development and health and the role of public health advocacy.
- ❖ Cover all food, transportation and lodging! You are responsible for tuition.

**Course faculty :** Cecilia Rosales MD.MS. , Jill Guernsey de Zapien,  
Lisa Staten PhD, Doug Taren PhD, Robert Guerrero MBA  
and Samantha Sabo MPH

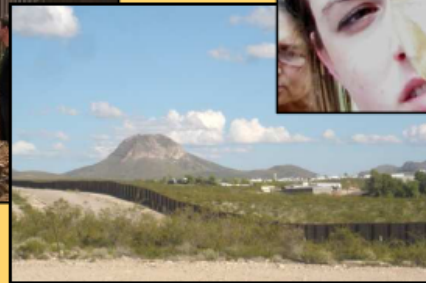
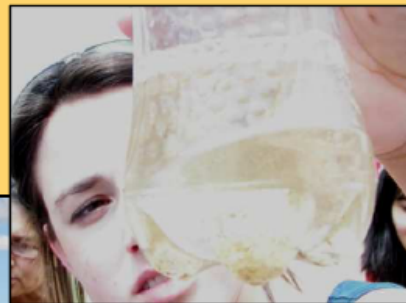
### **Registration is limited!**

For more information about  
CPH 597c and how to register for  
the course please contact  
Samantha Sabo  
[sabo@email.arizona.edu](mailto:sabo@email.arizona.edu)

Read and view local PBS coverage  
of the BHSI -2008 !  
(copy this link into your browser)  
<http://www.publichealth.arizona.edu/News/NewsReleases/BorderHealthDisparities.aspx>



**Experience the migrant  
trail through service!**



**Learn how  
Mexican health  
professionals  
prevent dengue!**

Interested in serving families and children in multi-cultural communities in the rural Southwest?

Please join us and register for the :  
**RURAL MATERNAL & CHILD HEALTH  
SERVICE LEARNING COURSE**

May 17-24, 2009



2008 FCH Students at Dine College, Navajo Nation

**During this one-week field-based course you will :**

- ❖ Learn about tribal, state and federal outreach models serving diverse social, cultural and health practices and the implications of these health care systems and practices on health status.
- ❖ Participate in service learning activities with community health representatives (CHRs), elected tribal leaders, Indian Health Service providers and traditional healers.

*Course Faculty: Nicolette Teufel-Shone PhD & Samantha Sabo MPH*



Interact with  
community members  
of all ages!



**Registration is limited to:**

**10 Family and Child Health (FCH) MPH students**

(this course is a FCH concentration requirement-non-intl health)

**5 MPH/DrPH/PhD or non-Public Health  
graduate students**

*Travel/Food /Lodging is covered for all students!*

*FCH MPH tuition covered by MCHC Training Grant*

*All other students are responsible for summer session tuition*

For more information about CPH 597b , how to register please  
send a brief email explaining your interest to:

Samantha Sabo

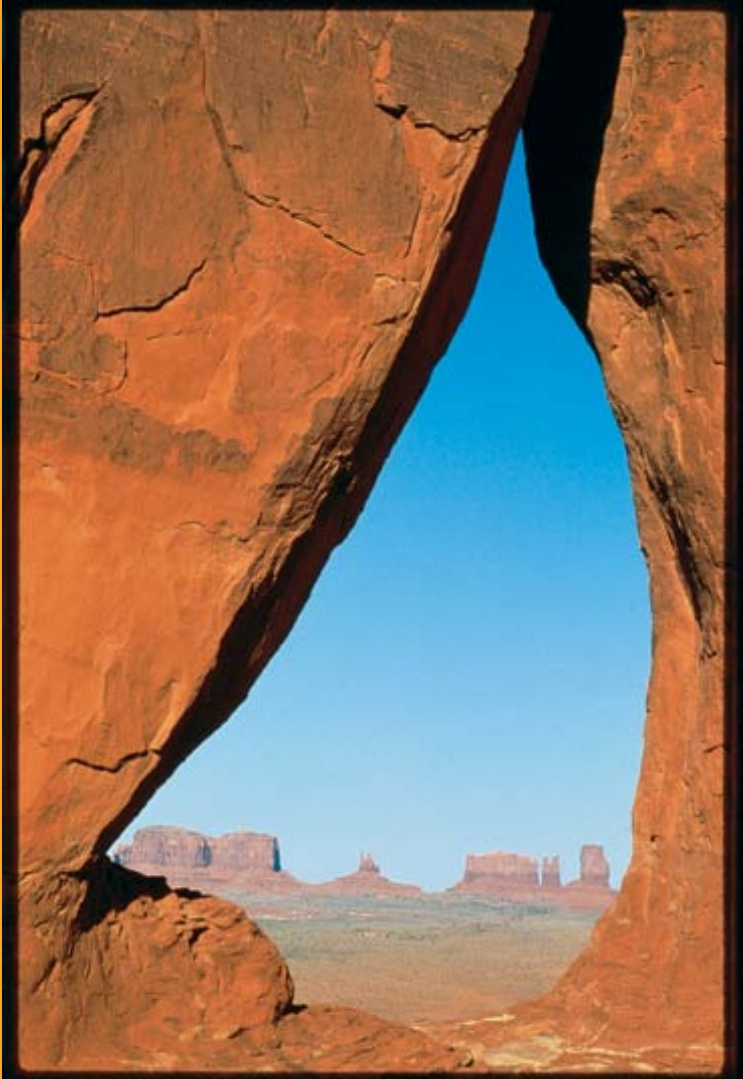
[sabo@email.arizona.edu](mailto:sabo@email.arizona.edu)

# *New Rural Service Learning Internships*



- Engages individual students in service learning experiences in rural hospital administration and management
- one-on-one service learning opportunities for MPH students in Critical Access Hospitals
- Gary Hart, RHO Director and Alison Hughes, AZ Flex Program Director are lead faculty

# *Public Health/Rural Health Professions Program*



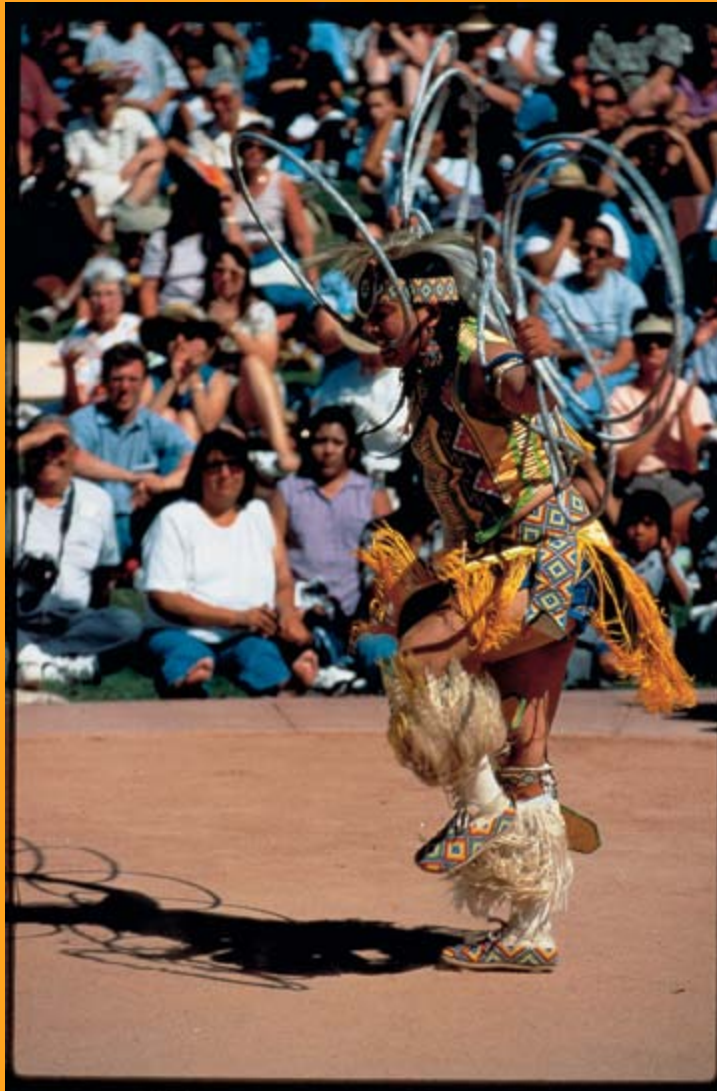
- AHEC Internships (4 out of 5 are filled)
  - Navajo: Family Planning
  - SEAHEC: Evaluation of health careers club
  - SEAHEC: Ambos Nogales Microcredit
  - Yuma: Federal legislation for contracting for farm labor
- Doctoral Fellowship (to be filled)

# *Interprofessional Institute*



- Collaboration of Colleges of Medicine, Pharmacy, Nursing & Public Health requested by Yuma Regional Center for Border Health/WAHEC
- RHO/COPH doing initial needs assessment in Yuma area to provide direction for plans for student rotations

# *Rural People Rural Policy*

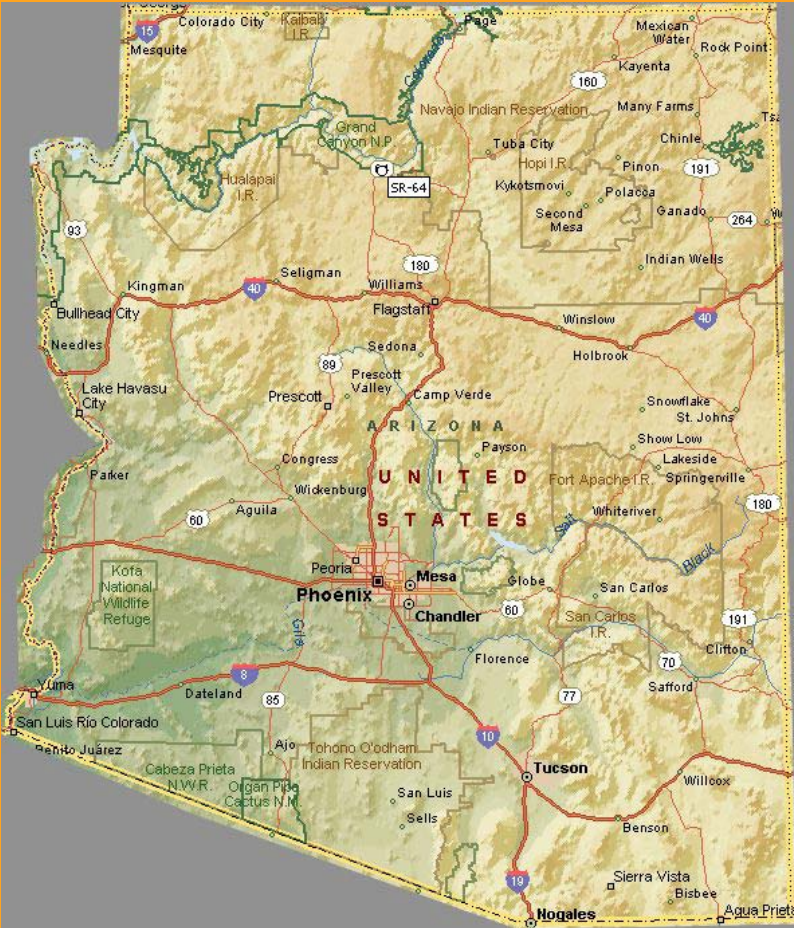


## Year 3 of 5-yr WKKF Initiative GOALS

- Attain national recognition as a model and collaborator in assessing and impacting public policy.
- Become a vigorous, informed, and successful coalition builder.
- Develop skills and tools to function independently in order to be able to respond to complex challenges.
- Use skills learned to significantly strengthen the AzSORH Rural Women's Health Initiative.
- Educate RHO/MEZCOPH senior leadership and organizational staff about RPRP and the synergistic benefits the initiative could bring to the strategic focus and future direction of both entities.
- Partner to develop the SW Network (14 organizations from Arizona, Colorado, and New Mexico) into a viable, sustaining, and influential regional and national entity focusing on selected rural policy issues.

# *Az Budget Crisis*

## *Examples of Health Consequences*



- Senate budget reduces eligibility for KidsCare, Arizona's Children's Health Insurance Program, from 200% FPL to 150% FPL
- Currently, 25,000 children between 150% and 200% FPL have access to affordable health care through KidsCare
- This number would dwindle to zero as current children reach adulthood and new children are not allowed on
- Another budget includes additional provider rate cuts
- Because AHCCCS does not reimburse as high a percentage of costs in rural areas as they do in urban areas further cuts will be very difficult for small hospitals/doctors

# *RHO Strategic Planning*



- Grant funded through Kellogg Action Lab because we are RPRP grantee
- Consultant will collect information in office and in state to help guide strategic planning process
- Consultant will facilitate process beginning in 09/09

# H1N1 (Swine Flu)



- UA College of Medicine Grand Rounds on H1N1 (Swine Flu), 05/13/09, 12 to 1pm
- To educate rural Arizona clinicians and other health practitioners about H1N1 as an emerging issue.
- An expert panel addressed the issues during a live video conference broadcast through the Arizona Telemedicine Network to 17 rural sites.
- Also made available through video streaming technology at: <http://streaming.biocom.arizona.edu/home/>



## 36th Annual Arizona Rural Health Conference

### Coming Out of the Recession Stronger and Healthier: Opportunities, Solutions and Collaborations



Photo courtesy of Alison Hughes

High Country Conference Center  
at Northern Arizona University  
201 W. Butler Avenue  
Flagstaff, Arizona

August 3 & 4, 2009

The 36th Annual Arizona Rural Health Conference provides an environment for networking and disseminating information among professionals and community members for rural Arizona. The audience includes many branches of the health sector representing community health; environmental and behavioral health; service providers; hospital and clinic administrators; health policy; students; and academic institutions holding an interest in rural, public and tribal health.

#### TRACKS

- Health Reform
- Health Information Technology
- Workforce and Workplace Solutions

#### EVENTS

**Bruce Gullledge Memorial Lecture**  
Presented by:  
Alan Morgan, CEO  
National Rural Health Association

- ▶ Dr. Andrew W. Nichols Rural and Border Health Policy Lecture
- ▶ General Sessions
- ▶ Arizona Rural Health Association Board Elections and Membership Meeting
- ▶ Rural Health Service Awards Luncheon
- ▶ Networking Opportunities
- ▶ Exhibitors
- ▶ Reception
- ▶ Breakout Sessions (9)
- ▶ Door Prizes

#### REGISTRATION

On-line registration will open early May. Registration fees will be posted prior to May on our website at: <http://www.rho.arizona.edu/Events/2008rhc/2009rhc.aspx>.

#### GUEST ROOMS

Drury Inn & Suites, 300 S. Milton Road,  
Flagstaff, Arizona.

The Drury Inn & Suites is located next to the High Country Conference Center and has rooms for our group at the rate of \$114.99 plus tax and includes: *breakfast, free long distance calls, evening beverages and snacks, high-speed internet, indoor pool and whirlpool.*

To make your room reservation call 918/773-4900 before Friday, July 17 and identify yourself with the Arizona Rural Health Conference to get the group rate.

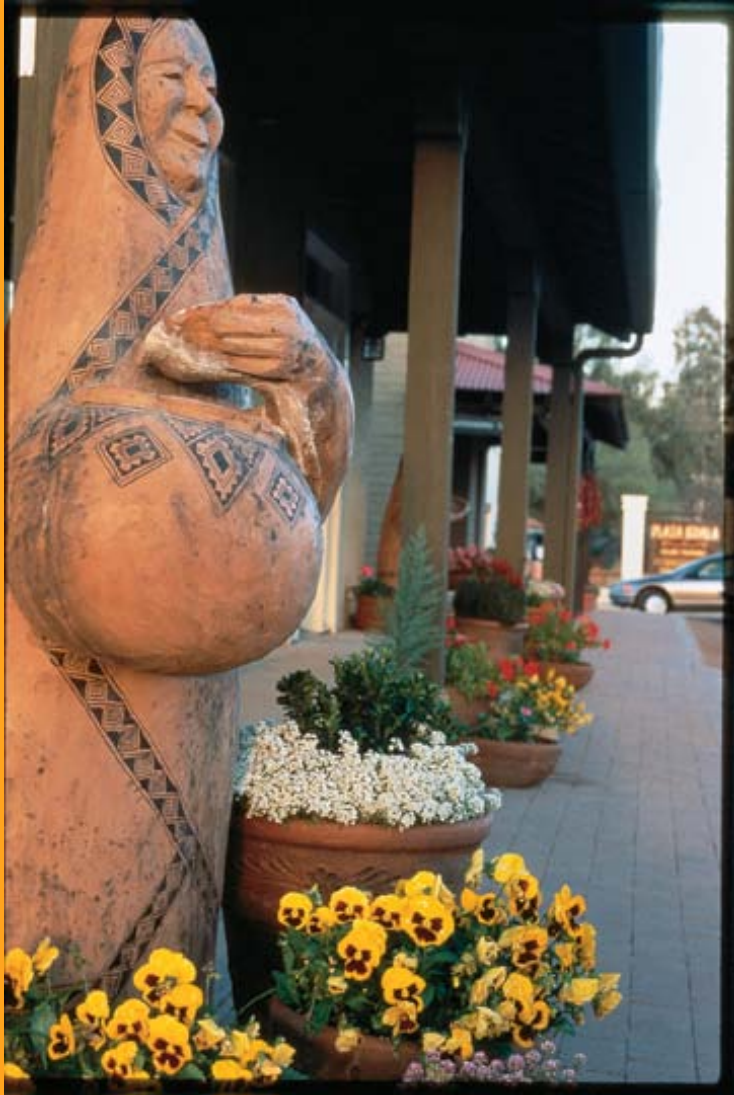
#### SPONSORING ORGANIZATIONS

- ▶ Rural Health Office, The University of Arizona Mel and Enid Zuckerman College of Public Health
- ▶ Arizona Rural Health Association, Inc.
- ▶ Arizona Health Facilities Authority

#### CONTACT

Rebecca Ruiz  
Rural Health Office,  
The University of Arizona  
MEZCOPH  
1295 N. Martin; P.O. Box 245177  
Tucson, AZ 85724-5177  
Phone: 520/626-2243  
Fax: 520/626-3101

# *AZ Rural Women's Health Initiative*



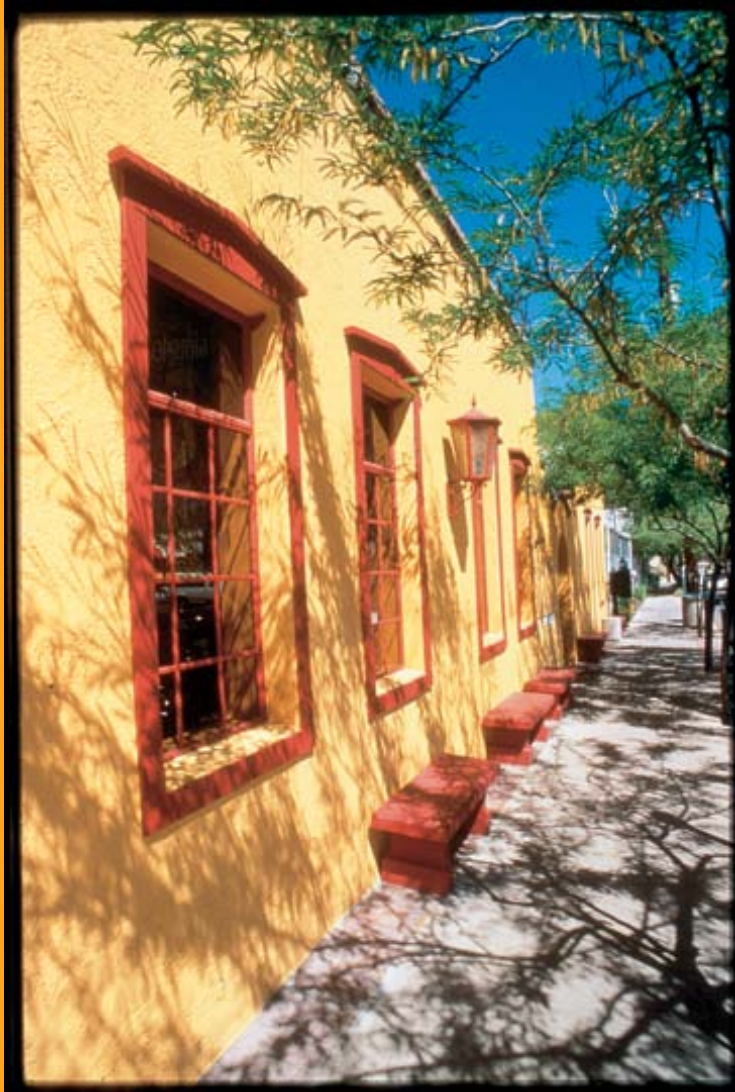
- AzSORH continues to provide technical assistance to the **Arizona Rural Women's Health Network (AzRWHN)**, which was formalized through a Network Planning grant (2008-09) from ORHP.
- We used knowledge and skills gained from **Rural People, Rural Policy Initiative** to develop network concepts around communication, framing and evaluation with the AzRWHN partners.
- Delivered Presentation about AzRWHI at NRHA
- Continue to produce quarterly newsletter for AzRWHI
- Continue to add to Website resources
- Collaborate with ADHS Bureau of Women's and Children's Health to do data analysis on AZ rural women's health issues

# *NIH Challenge Grant*



- To utilize a public health promotion paradigm to advance an empowering, strength-based, rural community capacity building model to create sustainable, healthy rural communities
- To focus on women and mothers as catalysts and partners in the community health promotion endeavors
- Challenge Topic - Creating Transformational Approaches to Address Rural Health Disparities
- \$1 million over 2 years
- Submitted to NCMHD 4/27/with start date 9/30/09

# ORHP Grants 2009



## OUTREACH GRANTS

- Hardrock Council on Substance Abuse, Inc. - Kykotsmovi Village Hopi Tribal Seat  
"Substance abuse"
- El Centro for the Study of Primary & Secondary Education - San Manuel  
"Alcohol and drug abuse prevention"

## NETWORK PLANNING GRANT

- Mariposa Community Health Center, INC - Nogales  
"Santa Cruz County Adolescent Wellness Coalition" (health literacy emphasis) and RHO is a partner

# NOSORH



- Performance Measures Committee co-chair - Bergsma
- Pilot state for Performance Measures Project
- Mentoring Committee - Peters
- HIT Committee, etc. - Hughes

# *National Health Security Strategy*



Public Health  
Preparedness  
A RAND HEALTH INITIATIVE

## *Development, Implementation and Evaluation of the National Health Security Strategy*

**Background Paper for the Second  
Meeting of the Community Core  
Committee**

**May 21, 2009**

- RAND was selected to support HHS's development of a National Health Security Strategy and an associated Implementation Plan.
- The NHSS will aid in achieving the goals identified in the HHS 2007-2012 Strategic Plan.
- RAND facilitates the Community Core Committee to act as an advisory group on the strategy and implementation plan.
- Lynda Bergsma is representing NOSORH/rural health on this committee.

The End

