



Office of Rural Health Policy Update

SORH Region E Annual Meeting
Laramie, WY
August 20, 2009

Nancy Egbert, RN, MPH
Keith Midberry, MHA
Department of Health and Human Services
Health Resources and Services Administration



HHS & HRSA



Why These Are Good Times for Rural Health

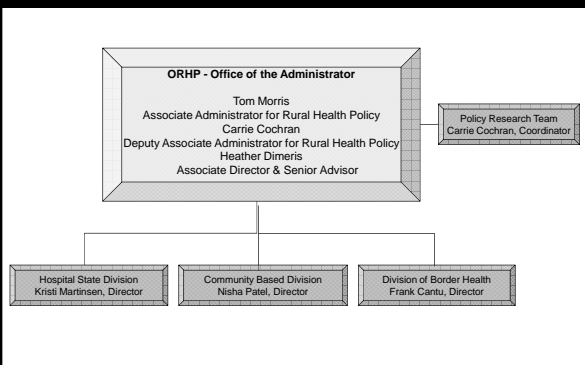
- HRSA and Departmental Leadership focused on rural
- Increased Investments
- 2010 Presidents budget favorable to Rural Programs
- Health Care Reform?



Mary Wakefield, Administrator of HRSA
Modern Healthcare's Top 25 Women for 2009



ORHP Organizational Chart





Performance Improvement Measurement System



PIMS

- Collect Measures for SORH and Flex
- Submitted through the HRSA Electronic Handbook (EHB)
- Due 30 days after the end of the budget year



State Offices of Rural Health



SORH Grant

- FY 2009: \$1.2M appropriation increase, small increase FY 2010
- Level funding for SORHs?
- FY 2010 grant dates:
 - Guidance released December 2009
 - Application due (EHB) February 2010



Small Hospital Improvement Program



SHIP Grant

- FY 2010 return to Quality, HIPPA and PPS in FY 2010 (HIT only 2009)
- Indirect cap will remain
- FY 2010 grand dates:
 - Guidance released early February 2010
 - Application due (EHB) April 2010

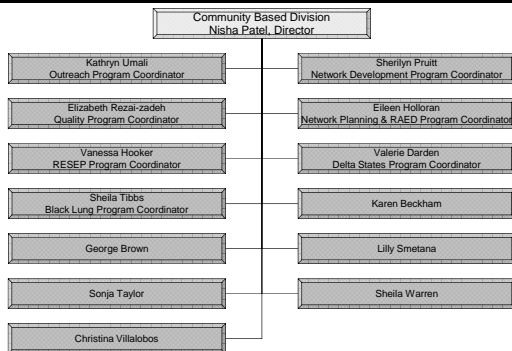
Completion of the CAH-HIT Grants



- Lessons Learned:**
- Flex an Effective Model to Promote HIT
 - Use of a Common Vendor
 - Evaluation Report a Tool

Flex Program

- Re-authorization focuses on Quality Improvement and Benchmarking
- Competing Continuation Cycle FY 2010
 - Refocus program activities
- FY 2010 grant dates:
 - Guidance released January 2010
 - Application due in Grants.gov March 2010





Community-Based Division

Programs

- Rural Health Care Services Outreach
- Rural Health Network Development
- Rural Health Network Planning
- Delta States Rural Development Network
- Small Health Care Provider Quality Improvement (Quality)
- Black Lung Clinic Program
- Radiation Exposure, Screening and Education
- Rural Access to Emergency Devices



2009 Focus

- Moving to a Foundation Model
 - Best Practices and Tracking
 - Sustainability
 - Economic Impact
 - Technical Assistance



CBD Awards, FY 2009

Outreach

- 94 new awards with May 1st start date
- 14 in SORH Region E
- WA - 1, MT - 4, AK - 2, CO - 1, ND - 2, SD - 2, OR - 2
- Next Cycle: FY 2011

Network Planning

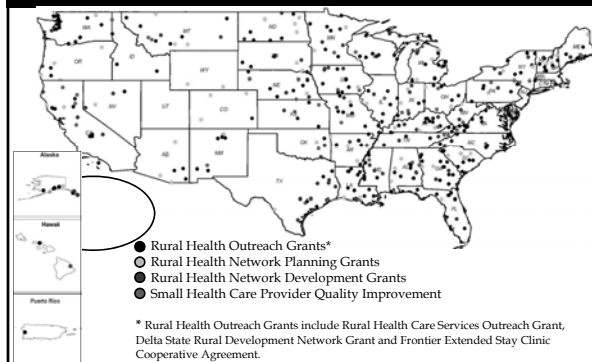
- 18 new awards with April 1st start date
- 8 in Region E
- CO - 3, ND -1, OR -1, SD - 3
- Next Cycle: FY 2010 - new wider range focus



RAED

- Estimate 5 new awards with Sept. 1st start date
- Next Cycle: FY 2011



CBD Rural Health Grants 2005-2009



 **Technical Assistance Workshops** 

▪ **Targeted Key States in 2008**

- Oklahoma
- Wyoming
- Colorado
- Idaho
- Pennsylvania
- Tennessee



▪ **In 2009**

- Regions Served by Historically Black Colleges and Universities
- Border Communities
- Tribal Communities

 **The Rural Voices Program** 

A Leadership Program for ORHP Grantees

- 30 participants in Spring 2009 (5 attended from Region E)
- Three-day Meeting focusing on Key Policy Issues and Leadership Training
- Will Continue 2010



The 2009 Rural Voices Class

 **Policy and Research** 

▪ **Regulation Review**

- More than 150 Regulations reviewed
- Legislation
- Reports to Congress

▪ **Research**

- 30 Reports from the Research Centers
- Numerous Journal Articles
- The Rural Research Gateway





Key Rural Regulatory Issues

- Inpatient PPS
- Outpatient PPS
- Physician Fee Schedule
- Skilled Nursing Facility PPS
- Rehab PPS
- Psych PPS
- Long Term Care PPS
- Ambulance Fee Schedule
- Medicare Advantage
- Medicare Part D
- Rural Health Clinics
- Medicaid Waivers
- Medicare GME



National Advisory Committee on Rural Health & Human Services

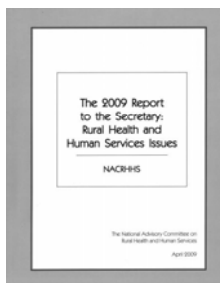
2009 Report to the Secretary

- Released July 2, 2009
- Chapters on:
 - Viability of the Medical Home in Rural Areas
 - Workforce and Community Development
 - Serving At-Risk Children in Rural Areas

2010 Report Topics

- Health Care Provider Integration
- Primary Care Provider Workforce
- Home and Community Based Care for Rural Seniors

SORH Representative – Graham Adams
Executive Secretary – Jennifer Chang





Policy Team

Policy Coordinator

- Carrie Cochran

Policy & Research

- Erica Molliver
- Michelle Goodman

Research Director

- Joan Van Nostrand

Quality

- Nancy Egbert
- Heather Dimeris

Truman Fellows

- Laura Merritt
- Kai Smith



ORHP Priorities for 2009



- Health Policy
 - Policy Review
 - Research
 - Health Information Technology
- Workforce
- Leadership



Reform May Bring Payment Changes



- How to adapt to linking payment more directly to quality?
 - Moving toward Value-Based Purchasing
 - Paying for "Episodes of Care"
- How does it fit for rural hospitals?



Patient Safety Clinical Pharmacy Services Collaborative



- 68 Multi-disciplinary teams; 20% rural
- Team-based learning
 - Using Institute for Healthcare Improvement's "Model for Improvement"
 - Improving outcomes in health and patient safety and increasing clinical pharmacy services
 - Open to HRSA Grantees as well as CAHs and RHCs
- PSPC 2.0 starts in Sept. 2009



Pharmacist in Jordan, MT



CMS Rural Resources



- CMS Rural Health Council
 - CMS Regional Office Rural Liaisons
 - <http://www.cms.hhs.gov/ProspMedicareFeeSvcPmtGen/downloads/RO-RH-Coordiators.pdf>
- CMS Rural Open Door Forum- Sign up at:
 - <http://www.cms.hhs.gov/OpenDoorForums>
 - Special ODF on Wage Index Reform 5/20 2-4 pm
- CMS Website Rural Health Center
 - <http://www.cms.hhs.gov/center/rural.asp>



Tools and Resources



Other Opportunities and Resources from ORHP

- New Manuals
 - Mental Health Best Practices
 - FQHC-CAH Collaboration
 - Rural HIV Best Practices
- Rural Health Research Gateway
 - Learn more about past and ongoing studies
 - <http://www.ruralhealthresearch.org/>





Tools and Resources



Health Workforce Information Center

- Web site - Easy access to key information on over 50 workforce topics and 80 professions, including:
 - Events & training
 - Organizations
 - Funding
 - News and Updates
 - Resources
- HWIC Call Center
 - 1-888-332-4942
 - info@healthworkforceinfo.org



<http://healthworkforceinfo.org>



Tools and Resources



• Workforce Programs – HRSA’s Bureau of Clinician Recruitment and Service

– Educational Support

- Nursing Loan Repayment

<http://bhpr.hrsa.gov/nursing/loanrepay.htm>

Nursing Scholarships

<http://bhpr.hrsa.gov/nursing/scholarship/>

National Health Service Corps

- Loan Repayment & Scholarships for Physicians, Dentists, Psychologists, Nurse Practitioners and Physician Assistants

- Recruitment & Retention Assistance for Communities

1-800-221-9393 or E-mail: callcenter@hrsa.gov

http://nhsc.bhpr.hrsa.gov/join_us/scholarships.asp



Tools and Resources



• A new EMS Resource

- Web site with background and updates on Federal EMS initiatives and programs

- Developed by the National Highway Traffic Safety Administration (NHTSA) at DOT

<http://www.ems.gov/>



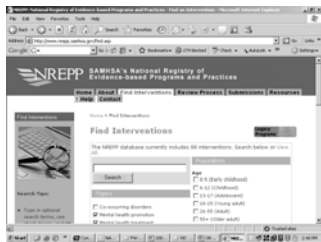
Tools and Resources





• Mental Health Evidence-Based Practices Web Site

- Developed by the Substance Abuse & Mental Health Services Administration (SAMHSA)

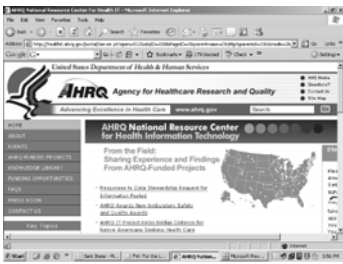
- Includes filter for rural and/or frontier location





<http://www.nrepp.samhsa.gov/find.asp>

 **Tools and Resources** 


- **Health Information Technology Portal**
 - Developed by the Agency for Health Research and Quality (AHRQ)



<http://healthit.ahrq.gov>



 **Tools and Resources** 


- **Technical Assistance for Rural Health Clinics**
 - Free quarterly TA conference calls provided by the National Association of Rural Health Clinics (NARHC)
 - Past topics include billing, pandemic flu, HIT, etc.



A Rural Health Clinic in Michigan

http://www.narhc.org/members/orhp_series.php

 **Tools and Resources** 

 **USDA Rural Development** Committed to the future of rural communities.

- **USDA offers housing, utilities and business programs**
- **Utilities programs include economic development loans and grants for:**
 - Distance learning and telecommunications;
 - Broadband access to underserved rural areas (Community Connect Grant); and
 - New pilot program on using combination grant/loan for electronic health records.

<http://www.rurdev.usda.gov/>



Grant Reviewers



ORHP needs YOU to be a grant reviewer!

- ORHP has multiple grant program reviews each year
- Reviewers with rural experience needed to be a part of our Objective Review Committee panels
- You must register with HRSA to be a reviewer
 - Register at: <https://grants.hrsa.gov/webreview/>
- Indicate "rural health" as one of your specialties in the background information section
- Tell ORHP staff which programs you are familiar with



Contact Information



Office of Rural Health Policy
 5600 Fishers Lane, Room 9A-42
 Rockville, MD 20857

(301) 443-0835

<http://ruralhealth.hrsa.gov>

Nancy Egbert - negbert@hrsa.gov
 Keith Midberry - kmidberry@hrsa.gov
