

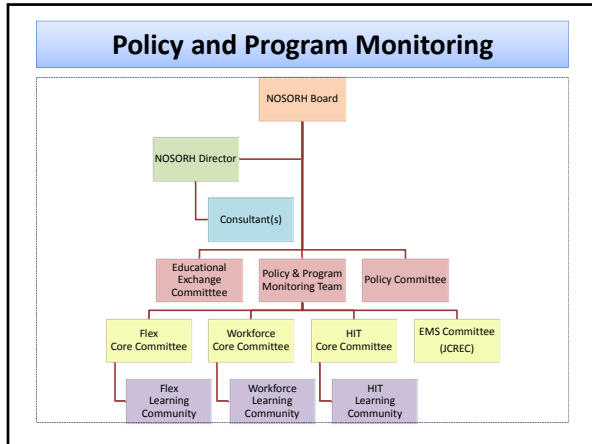
Policy and Program Monitoring Team

The times they are a 'changing...

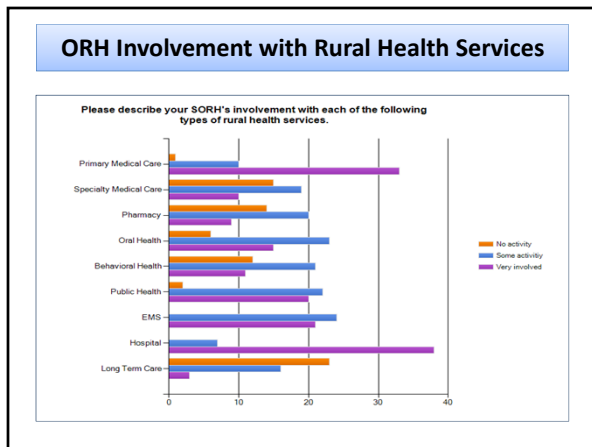
- In the interval between today and 2014-5, many changes are scheduled to be implemented in accordance with the Patient Protection and Affordable Care Act (PPACA). Many of the changes will be announced with little advance notice and will require rapid response from the rural health system. Changes will include implementation of :
 - PPACA Program Initiatives
 - PPACA Health Market Changes
 - PPACA Regulatory Changes
- In addition, continuing efforts to achieve federal budget sustainability will lead to budget and appropriation changes affecting the rural health system.
- ORHs need an *early alert system* to help them respond to these changes.

Policy and Program Monitoring Team

- **The Challenge:** There is so much information on new developments being disseminated, it is sometimes hard to determine which changes will have the greatest impact on rural health. It is also difficult to determine which changes will require a responding change in the activities of ORHs.
- **Role of the PPMT:** The PPMT is the rapid response unit of NOSORH for monitoring and evaluating new developments. The PPMT helps in:
 - **Informing and Educating:** providing information to ORHs about changes in programs, statutes, rules and funding.
 - **Assessing Impact:** consulting with ORHs to identify those changes which will have the biggest impact on rural health and ORHs.
 - **Feedback:** Collecting information from ORHs about what NOSORH can do in support of needed changes.
- **Recommendations to the Board:** The results of these reviews will be forwarded to the NOSORH Board for further action, as appropriate.

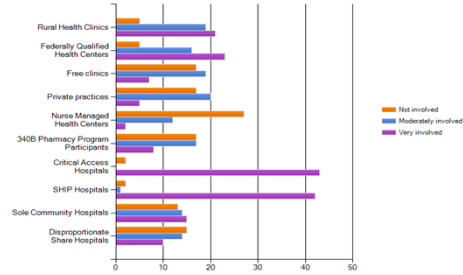


- ### Organizing ORHs for Rapid Response
- The need for response networks.
 - Not All Developments are Critical.
 - Overload should be Avoided.
 - ORHs may have different issue focus and expertise.
 - Create different response networks for a range of different issues.
 - Inventory and profile ORH activity emphases.
 - Develop issue-specific contact lists.
 - Use lists to guide PPMT consultation with ORHs on specific topics.
 - Create mechanism for ORHs to communicate new developments from the State level.



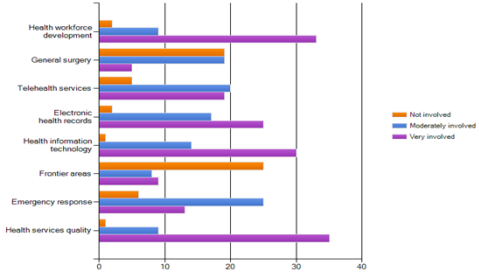
ORH Involvement with Rural Health Providers

Please rate your SORH involvement with each of the following type of service providers.



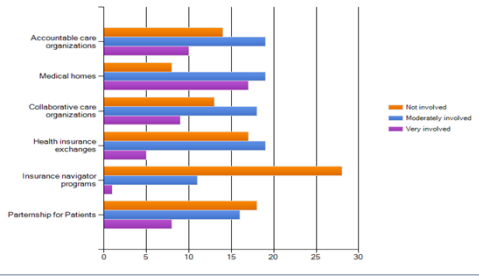
ORH Involvement with Rural Health Issues

Please rate your SORH's involvement with each of the following.



ORH Involvement with PPACA Initiatives

Please rate your SORH's involvement with each of the following health care reform issues.



<p>Next Steps</p>
