

Substance Abuse and Mental Health Services Administration (SAMHSA)

Lisa Park
Office of Policy, Planning and Budget

Presentation at the
National Organization of State Offices of Rural Health Annual Conference
Traverse City, Michigan
September 26, 2008

U.S. DEPARTMENT OF HEALTH AND HUMAN SERVICES
Substance Abuse and Mental Health Services Administration
www.samhsa.gov

About SAMHSA

VISION
A Life in the Community for Everyone

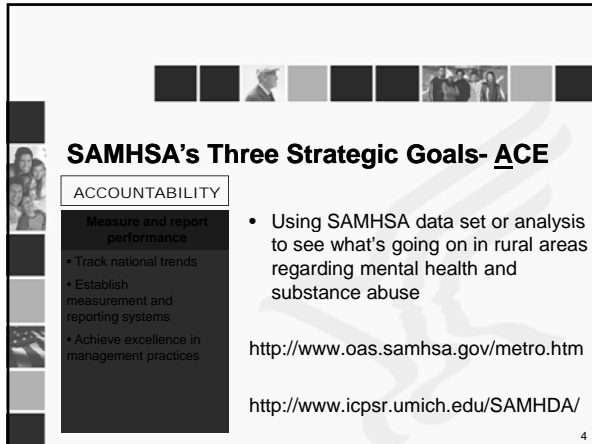
MISSION
Building Resilience and Facilitating Recovery

2

SAMHSA's Three Strategic Goals- ACE

ACCOUNTABILITY	CAPACITY	EFFECTIVENESS
Measure and report performance <ul style="list-style-type: none"> Track national trends Establish measurement and reporting systems Achieve excellence in management practices 	Increase service availability <ul style="list-style-type: none"> Support needs assessment, planning and system improvements Promote appropriate outreach, assessment, and referral Support service expansion Promote consumer choice 	Improve service quality <ul style="list-style-type: none"> Improve client outcomes in SAMHSA programs Identify and promote evidence-based approaches Support recruitment, education, and retention of workforce

3



SAMHSA's Three Strategic Goals- ACE

ACCOUNTABILITY

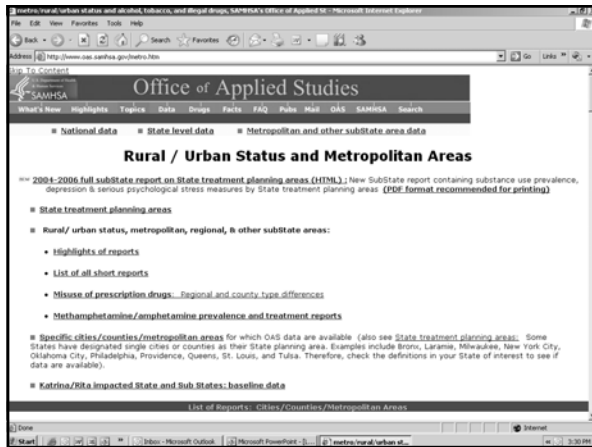
- Measure and report performance
- Track national trends
- Establish measurement and reporting systems
- Achieve excellence in management practices

- Using SAMHSA data set or analysis to see what's going on in rural areas regarding mental health and substance abuse

<http://www.oas.samhsa.gov/metro.htm>

<http://www.icpsr.umich.edu/SAMHDA/>

4



Office of Applied Studies

Rural / Urban Status and Metropolitan Areas

2004-2006 full substate report on State treatment planning areas (HTML); New SubState report containing substance use prevalence, depression & serious psychological stress measures by State treatment planning areas (PDF format recommended for printing)

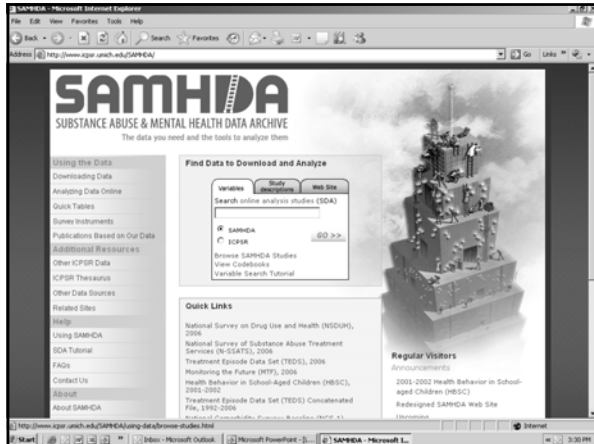
- State treatment planning areas
- Rural / urban status, metropolitan, regional, & other substate areas:
 - Highlights of reports
 - List of all short reports
 - Misuse of prescription drugs... Regional and county type differences
 - Methamphetamine/amphetamine prevalence and treatment reports
- Specific cities/counties/metropolitan areas for which OAS data are available (also see State treatment planning areas: Some States have designated single cities or counties as their State planning area. Examples include Bronx, Laramie, Milwaukee, New York City, Oklahoma City, Philadelphia, Providence, Queens, St. Louis, and Tulsa. Therefore, check the definitions in your State of interest to see if data are available).
- Katrina/RIIA Impacted State and Sub States: baseline data

List of Report(s): Cities/Counties/Metropolitan Areas



List of Report(s): Cities/Counties/Metropolitan Areas

- 2004-2006 full substate report on State treatment planning areas (HTML); New SubState report containing substance use prevalence, depression & serious psychological stress measures by State treatment planning areas (PDF format recommended for printing)
- The NSDUH Report... Nonmedical Use of Pain Relievers in Substate Regions: 2004 to 2006
- The NSDUH Report... Demographic and Geographic Variations in Injection Drug Use
- The NSDUH Report... Illicit Drug Use by Race/Ethnicity in Metropolitan and Non-Metropolitan Counties: 2004 and 2005
- The NSDUH Report... Substance Use in the 15 Largest Metropolitan Statistical Areas, 2002-2005
- Misuse of prescription drugs... Regional and County Type differences
- The DASIS Report... Methamphetamine / Amphetamine Treatment Admissions in Urban and Rural Areas, 2004
- 2002-2004 Substate Report on State Treatment Planning Areas (HTML)... (PDF format)
- The NSDUH Report... Alcohol Dependence or Abuse in Substate Areas (State treatment planning areas)
- The NSDUH Report... Substance Abuse or Dependence in Metropolitan and Non-Metropolitan Areas, 2004 Update
- The DASIS Report... Treatment Admissions in Rural Areas, 2002
- The NSDUH Report... Marijuana Use in Substate Areas
- The NSDUH Report... Underage Drinking in Rural Areas
- The DASIS Report... Treatment Admissions in Urban & Rural Areas Involving Abuse of Narcotic Painkillers: 2002 Update
- The DASIS Report... Treatment Admissions in Urban & Rural Areas Involving Abuse of Narcotic Painkillers



SAMHSA's Three Strategic Goals- ACE

CAPACITY

- Increase service availability
- Support needs assessment, planning and system improvements
- Promote appropriate outreach, assessment, and referral
- Support service expansion
- Promote consumer choice

- Last year's grant announcements included:
 - Youth Suicide Prevention and Early Intervention
 - Drug Free Communities
 - Grants to Expand Substance Abuse Treatment Capacity in Targeted Areas of Need

<http://www.samhsa.gov/grants/2009/fy2009.aspx>

8


SAMHSA's Three Strategic Goals- ACE

CAPACITY

- Increase service availability
- Support needs assessment, planning and system improvements
- Promote appropriate outreach, assessment, and referral
- Support service expansion
- Promote consumer choice

- From SAMHSA's home page (<http://www.samhsa.gov>), find resources such as:
 - Substance abuse and mental health treatment locator
 - Link to the National Suicide Prevention Lifeline: 1-800-273-TALK(8255) and <http://www.suicidepreventionlifeline.org/>

9



SAMHSA's Three Strategic Goals- ACE

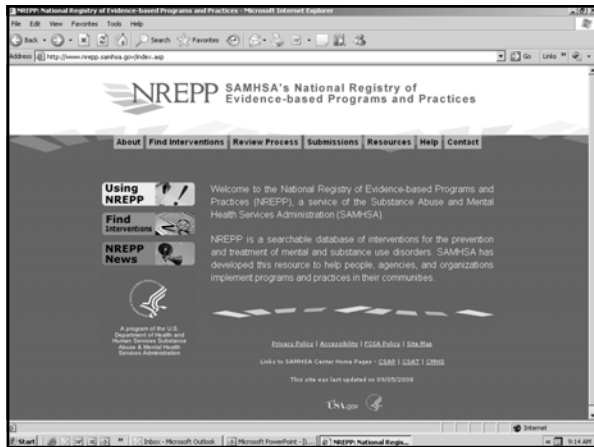
EFFECTIVENESS

Improve service quality

- Improve client outcomes in SAMHSA programs
- Identify and promote evidence-based approaches
- Support recruitment, education, and retention of workforce

- From SAMHSA's home page (<http://www.samhsa.gov>), also find resources such as:
 - National Registry of Evidence-based Programs & Practices (NREPP)- searchable database of interventions for the prevention and treatment of mental and substance use disorders

<http://www.nrepp.samhsa.gov/> 10



The screenshot shows the NREPP website with the following content:

NREPP SAMHSA's National Registry of Evidence-based Programs and Practices

Navigation: About | Find Interventions | Review Process | Submissions | Resources | Help | Contact

Using NREPP | **Find Interventions** | **NREPP News**

Welcome to the National Registry of Evidence-based Programs and Practices (NREPP), a service of the Substance Abuse and Mental Health Services Administration (SAMHSA).

NREPP is a searchable database of interventions for the prevention and treatment of mental and substance use disorders. SAMHSA has developed this resource to help people, agencies, and organizations implement programs and practices in their communities.

A program of the U.S. Department of Health and Human Services, Substance Abuse & Mental Health Services Administration

English | Español | Accessibility | FOIA | Privacy | Site Map

Links to SAMHSA Center Home Page | CARS | CMAT | CTRIS

This site was last updated on 09/05/2008

USA.gov



National Rural Institute on Alcohol and Drug Abuse

- This unique rural alcohol and drug abuse conference provides participants the opportunity to personally interact with other rural alcohol and drug abuse professionals, federal agency representatives, and nationally known institute faculty and resource
- 25th annual conference to take place May 31 - June 4, 2009 in Menomonie, Wisconsin
- <http://www.uwstout.edu/outreach/conf/nri/>

12
