

Service Learning
 A Tool for Recruiting Rural Health Professionals

Lynda Bergsma, PhD


Arizona State Office of Rural Health



Mark and Evrell Zuckerman
College of Public Health

What is Service Learning?

Service learning is a method of experiential education that can establish and strengthen partnerships between health profession schools and rural and underserved communities; instill an ethic of community service and social responsibility in health professions schools, students, and faculty; and equip health professionals with the community-oriented competencies necessary to practice in a changing health care environment.



Mark and Evrell Zuckerman
College of Public Health

Service-Learning is a collaborative approach...

- Addresses community-identified concerns & broad determinants of health
- Involves community partners throughout the process
- Includes reciprocal learning
- Includes guided student reflection to transform student experiences gained from service activities & course materials into genuine learning
- Places emphasis on developing civic engagement skills & achieving social change
- Builds relationships between rural communities & university faculty/staff
- Balances service & learning objectives



Mark and Evrell Zuckerman
College of Public Health



Rural Health Office

Why Engage in Service-Learning?

- Students
 - Personal Outcomes
 - Personal development
 - Interpersonal development
 - Social Outcomes
 - Reduces stereotyping
 - Facilitates cultural & racial understanding
 - Increases social responsibility/citizenship skills
 - Learning Outcomes
 - Impact on academic learning
 - Applications to “real world”

“Spending time with leaders in the County Health Department showed me that highly motivated people in the right place can do so much to improve the health of the people in a community. I could honestly see myself coming back to work in the area one day.”

THE UNIVERSITY OF ARIZONA
M.D. and Paul D. Anderson
College of Public Health

Rural Health Office

Why Engage? (cont'd)

- Faculty
 - Very satisfied with students' learning
 - Opportunities for community-engaged scholarship emerge

“As a faculty member participating in this course, I was so energized and moved by seeing our students and community partners come together to discuss complex social problems and solutions to the severe health disparity issues we face at our border.”

THE UNIVERSITY OF ARIZONA
M.D. and Paul D. Anderson
College of Public Health

Rural Health Office

Why Engage? (cont'd)

- Communities
 - Enjoy & benefit from student participation
 - Value useful service
 - Build capacity
 - Establish enhanced university relationships

"It reconnected me with my passion to see "change" and made me feel valued as a public health worker. The student-run community forum helped to highlight windows of opportunity for all of us together to work for change."




Rural Health Office

Who can be Community Partners ?

▪ Community Health Centers	▪ Homeless Shelters
▪ Hospitals	▪ Immigrant Rights Organizations
▪ County or City Health Departments	▪ Sheltered Workshops
▪ Elementary, Middle & High Schools	▪ Substance Abuse Treatment Centers
▪ Faith-based Initiatives	▪ State Health Departments
▪ Group Homes	▪ Tribal Organizations
▪ Head Start	▪ Women, Infants and Children Nutrition Program (WIC)
▪ Boys and Girls Clubs	
▪ Community Economic Development Groups	
▪ Senior Centers	


....and many, many others




Rural Health Office

Rural Public Health Professions Program


- A partnership between the University of Arizona Mel and Enid Zuckerman College of Public Health/Arizona Rural Health Office and the Arizona Area Health Education Centers
- Established in early 2009 to create opportunities within Arizona's rural & underserved communities for MPH & DrPH students to:
 - participate in *service-learning courses for academic credit* that increase their knowledge & understanding of public health issues & assets
 - partner *with community-based organizations* to meet public health needs
 - have *positive experiences* that will impact their career choices after graduation



Rural Health Office

Rural Public Health Professions Program

- Three 1-week, 1-credit, intensive team service-learning institutes in:
 - Rural Public Health
 - Tribal Maternal & Child Health
 - U.S-Mexico Border Health
- Rural Health Policy Practicum experiences
- Internships with community-based organizations, including Critical Access Hospitals, that focus on public health needs
- Service-learning experiences with rural & underserved community-based groups integrated into existing courses



Rural Health Office

2010-2011 Maternal and Child Health in Urban Settings
August 14-20, 2011

2010-2011 Maternal and Child Health in Rural Settings
August 21-27, 2011

2010-2011 Tribal Maternal and Child Health
August 28-September 3, 2011

2010-2011 Rural Health Service Learning Institute
May 15-20, 2011

2010-2011 U.S.-Mexico Border Health Service Learning Institute
September 12-18, 2011

Register on your own at www.ruralhealthoffice.org or contact us at rhoffice@u.arizona.edu

SUMMERTIME SERVICE LEARNING
One week. One life-changing opportunity.

Interested in rural public health issues and economic development challenges in southwestern mining communities?

Join us and register for the **RURAL HEALTH SERVICE LEARNING COURSE** May 15-20, 2011 (1 CREDIT SERVICE LEARNING)

During this one-week, field-based course you will:

- Learn about demographics, health economics and epidemiology, and health care delivery in the Copper District & San Carlos Apache region
- Collaborate with community health workers involved in public health and health care
- Gain experience in the field
- Gain insight into the needs, challenges and opportunities of rural communities
- Gain insight into the needs, challenges and opportunities of rural communities

Course Faculty: Lynda Ferguson PhD, Dr. David G. Johnson PhD, Jennifer Pickett, BA

Registration is limited to 15 students. While MPH/DrPH students will be given priority, other graduate students may apply. Enrollment is limited to graduate students. For more information about this course, and how to register, please visit www.ruralhealthoffice.org or contact us at rhoffice@u.arizona.edu






Rural Health Office

Rural Health Service Learning Institute Course Description


This one-credit course engages students in community-based collaboration with a rural Arizona community where copper mining is the major industry providing 20% of employment in the area. Another major employer is Gila County Government, and tourism, small business, and ranching, also contribute to the economy. Students provide service to the host community while learning about factors influencing public health in a rural community environment. Requires 6-day stay on site. Room and travel provided.



Rural Health Office

Rural Health Service Learning Institute Course Objectives

1. Describe the demographic & economic trends of Gila County, specifically in the communities of Globe-Miami, San Carlos & Young communities.
2. Compare major health outcome measures and epidemiological trends in the County & communities to state & national level data.
3. Assess the health & economic development impact of the mining & ranching industries on the Globe-Miami, San Carlos & Young communities.
4. List and describe community partners related to public health & health care organizations in the County & communities.
5. Collaborate with community partners to complete service projects addressing community needs.



THE UNIVERSITY OF ARIZONA
S&P and L&H Departments
College of Public Health

Rural Health Office

CPIH 34759 - Rural Health Service Learning Institute - (May 13-20, 2011)

	Day 1 - Sun 5/15	Day 2 - Mon 5/16	Day 3 - Tues 5/17	Day 4 - Wed 5/18	Day 5 - Thurs 5/19	Day 6 - Fri 5/20
SESSION TIMES AND DETAILS	8:00 am - 9:00 am	8:00 am - 9:00 am	8:00 am - 9:00 am	8:00 am - 9:00 am	8:00 am - 9:00 am	8:00 am - 9:00 am
Faculty	Dr. Frank (CPIH) / Dr. [Name]	Dr. Frank (CPIH) / Dr. [Name]	Dr. Frank (CPIH) / Dr. [Name]	Dr. Frank (CPIH) / Dr. [Name]	Dr. Frank (CPIH) / Dr. [Name]	Dr. Frank (CPIH) / Dr. [Name]
Location	Arizona State University	Arizona State University	Arizona State University	Arizona State University	Arizona State University	Arizona State University
Session Details	Introduction to the course and the rural health service learning institute. Overview of the course and the rural health service learning institute.	Introduction to the course and the rural health service learning institute. Overview of the course and the rural health service learning institute.	Introduction to the course and the rural health service learning institute. Overview of the course and the rural health service learning institute.	Introduction to the course and the rural health service learning institute. Overview of the course and the rural health service learning institute.	Introduction to the course and the rural health service learning institute. Overview of the course and the rural health service learning institute.	Introduction to the course and the rural health service learning institute. Overview of the course and the rural health service learning institute.
Faculty	Dr. Frank (CPIH) / Dr. [Name]	Dr. Frank (CPIH) / Dr. [Name]	Dr. Frank (CPIH) / Dr. [Name]	Dr. Frank (CPIH) / Dr. [Name]	Dr. Frank (CPIH) / Dr. [Name]	Dr. Frank (CPIH) / Dr. [Name]
Location	Arizona State University	Arizona State University	Arizona State University	Arizona State University	Arizona State University	Arizona State University
Session Details	Introduction to the course and the rural health service learning institute. Overview of the course and the rural health service learning institute.	Introduction to the course and the rural health service learning institute. Overview of the course and the rural health service learning institute.	Introduction to the course and the rural health service learning institute. Overview of the course and the rural health service learning institute.	Introduction to the course and the rural health service learning institute. Overview of the course and the rural health service learning institute.	Introduction to the course and the rural health service learning institute. Overview of the course and the rural health service learning institute.	Introduction to the course and the rural health service learning institute. Overview of the course and the rural health service learning institute.

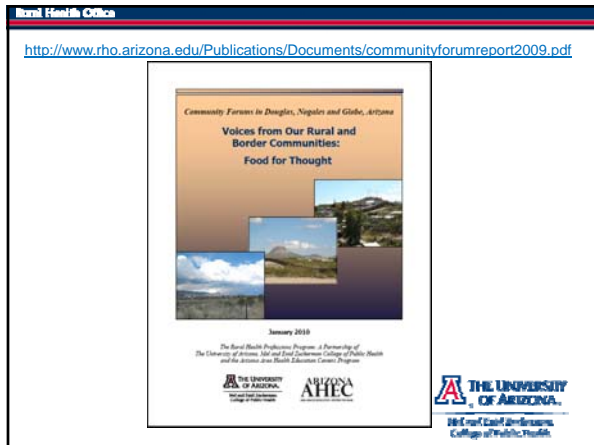














Challenges & Successes

- It's a lot of work
 - Planning with community partners
 - Advising/teaching/mentoring students & facilitating their reflections
- While these rural service learning courses, practica & internships require exceptional time and energy from faculty, community partners, and students, the exceptional learning that takes place by all participants is more than worth the effort
- OUTCOMES??