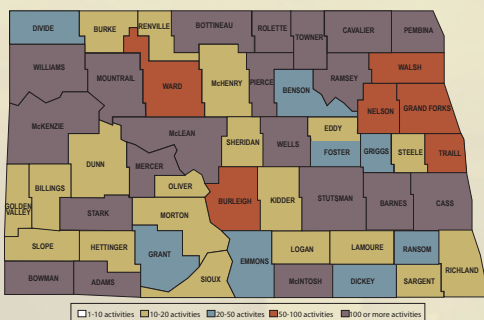


TruServe

TruServe is a web-based tracking system that allows organizations to conveniently monitor and report progress tailored to their needs

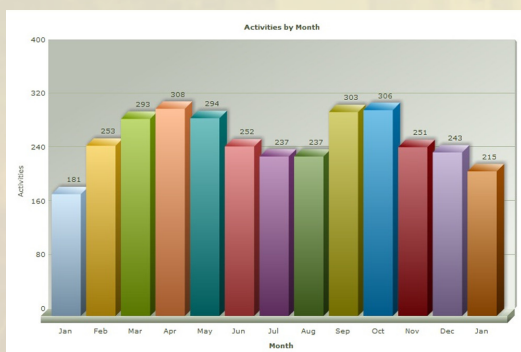


PCO NOSORH Performance Measures Tool

- Cost: \$3000 annually (payable to NOSORH)
- Your own custom URL and website
- Access for all PCO employees within your office
- Ability to track unlimited activities
- Create tailored reports, charts, and maps within seconds
- Save charts and maps created by the tool for use in other programs
- Track PCO and up to ten other programs or measures of your choice
- Document and report interaction with other organizations around the nation
- Unlimited access to the North Dakota Center for Rural Health help desk during business hours

Enhanced PCO NOSORH Performance Measures Tool

- Cost: \$8000 annually (payable to NOSORH)
- Everything in the NOSORH Performance Measures Tool
- Committee tracking – attach committee involvement to activities
- Impact tracking – attach impact/evaluation to activities
- Track an unlimited number of programs and measures
- One fully customizable drop down field
- Three fully customizable check box fields
- One fully customizable text field
- Ability to grant access to two partner organizations
- On-site admin access to make changes to your system



How is The University of North Dakota Center for Rural Health involved?

- The system was created for internal use by the Center for Rural Health
- Dedicated support is provided Monday through Friday 8:00 am-4:30 pm CST
- On-site start up training and implementation is offered
- All data is stored and backed up on three separate servers in three different locations
- All data is secured and encrypted (SSL Web Security Certification)



Center for Rural Health
The University of North Dakota
School of Medicine & Health Sciences

Learn more
TruServe.org

Questions

Mark Barclay, TruServe Coordinator
mark.barclay@med.und.edu
701.777.3300